



Office  
**Automata**

**Data Driven Insights for your  
Remote Workforce**

## Common challenges with business process management:

- **Discovery & Mapping:** *What are your processes?*
- **Analysis & Optimization:** *Can your processes be improved?*
- **Audit & Compliance:** *Are your SOP's being followed?*
- **Automation & RPA:** *Which processes should be automated?*



**Our AI total user data capture** enables end-to-end business process management:

- **Discovery & Mapping:** Enables full task and process discovery.
- **Analysis & Optimization:** Provides process and productivity analytics.
- **Audit & Compliance:** Tracks processes & SOP's in real-time.
- **Automation & RPA:** Simplifies process automation and bot creation.



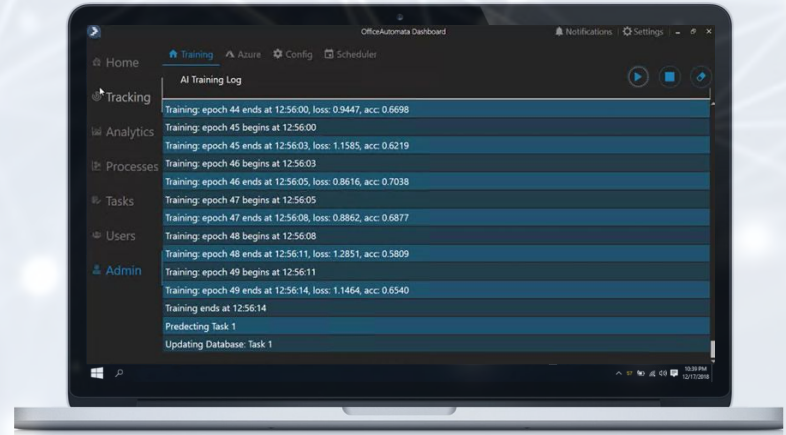
**Intelligent Process Management begins by** unobtrusively tracking and storing your employees workflows on web applications, proprietary software systems, desktop applications, PDF's, and documents on premises.

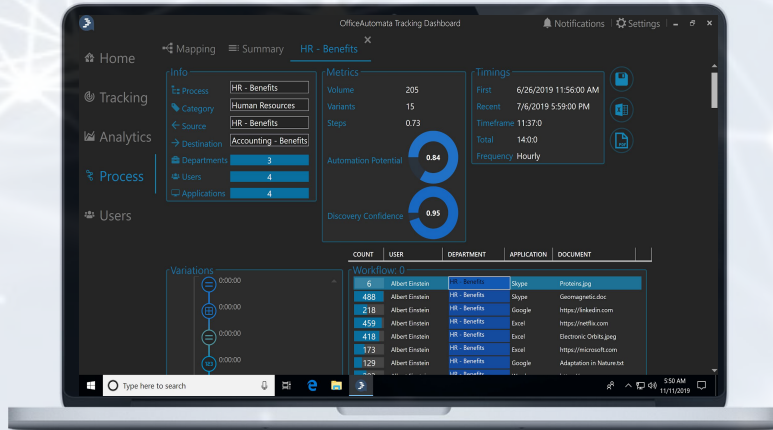




You will then get **Workforce Data Insights** to increase **engagement** and **productivity**, such as effectiveness, application usage, daily events and idle time.

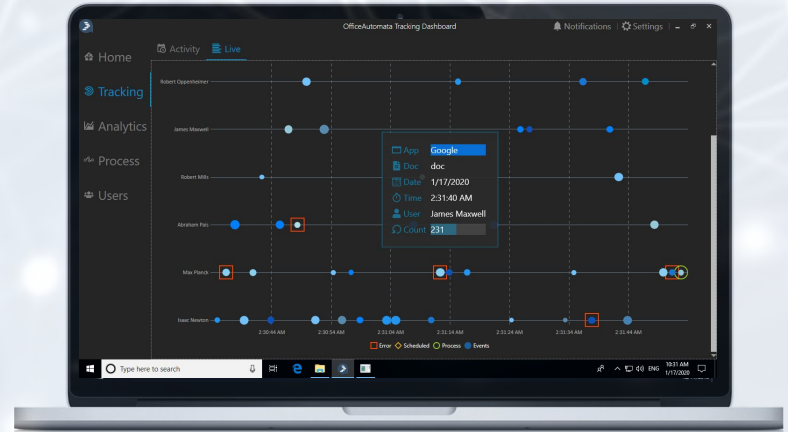
**Intelligent Process Discovery can then decode your organization's** computer based business tasks and processes, and autonomously define individual, cross-user and interdepartmental processes.





The end result is **in-depth analytics** and a **map** of each task and process along with its variations, optimized for process improvement and automation.

**The processes can then be tracked for audit and compliance** for each user; and productivity and costs can be analyzed.



# Feature Comparison

	Office Automata	Celonis	UI Path	Kryon	Nintex	Phaseware	Stepshot	Teramind
User Tracking	✓							✓*
Productivity Analysis	✓							✓
SOP Creation	✓						✓	
SLA Tracking	✓					✓		
Process Recording	✓		✓	✓	✓			
AI Process Discovery	✓			✓**				
Process Mining	Q2-2020	✓	✓					
ANNUAL PRICE	\$9,000	\$15,000+	\$20,000+	\$100,000+	\$15,600+	\$5,000+	\$4,500+	\$30000

# Benefits

1. **Identifies automation opportunities** with detailed AI-developed process maps.
2. **Enables targeted cost reduction** through detailed process Activity-Based costing analytics.
3. **Drives continuous process improvement** through real-time process identification and monitoring.
4. **Know accurate turn-around-time** & time and motion data to ensure SLA's are met.



# Hardware Requirements



## Employee Tracking:

- Memory: 46 MB of Ram
- Processing Power: 1-2% of CPU
- Installer Size: 70MB
- OS: Windows 7+
- Framework: .NET 4.6.2
- Browser: Chrome or Internet Explorer



## AI Server:

- Win 10/Server VM with 8GB RAM
- GPU with 8-32GB+ RAM
- SQL Server 2016/Express

# Pricing

## Starting at \$3000 a month

- Licenses require a minimum of commitment of 3-months.
- Deployment fee of \$650 per server is waived for 12-month contracts.
- For 100 users

*\*All prices are in USD\$ and does not include GST, Pricing for the SEA market only*

# Strategic Collaborators

protiviti®

 Allied Media

 Jiffy.ai



# Case Study



## MC Payment

### Use Case:

MC Payments transacts \$50m annually and needed to automate 3 million chargeback, payout & settlement, and merchant onboarding transactions on their online payment gateway, while also gaining visibility into employee activities in different countries.

### Results:

- Captured the daily actions of 8 users to precisely map business process to be made into automations.
- Assisted in the setup of an Automation department with key lead individual to manage the tracking and future automation development of the company
- Allowed for the discovery and documenting of key productivity behaviours such as staff hours worked, staff hours idle, level of staff activity, and number of user activity events per user/per day
- Deployed automations and user behavior tracking reporting for the entire organisation
- After a full deployment of centralised tracking of user activity and engagement in HQ, will deploy throughout their 4 offices in South East Asia.

# Common Questions

- **Data & Network Security**

- All data is encrypted
- All data is on-prem (you secure the Databases)

- **Cloud AI Training**

- Cloud training is 'renting' AI hardware through your Azure account

- **On-Prem AI Hardware**

- If on-prem, GPU is preferred, CPU will take 10x longer



Office  
**Automata**

[www.officeautomata.com](http://www.officeautomata.com)

[mail@officeautomata.com](mailto:mail@officeautomata.com)

+1-323-577-2653

#14-04 Singapore Business  
Federation Centre  
Singapore 068914



## ***Non-Disclosure Disclaimer:***

*This document and the information contained herein is confidential. This document is provided for information purposes only for the exclusive use of the recipients to whom it is addressed and the contents hereof are subject to change without notice. Whilst the information contained herein has been prepared in good faith, it is not warranted to be error-free, nor subject to any other warranties or conditions, whether expressed orally or implied in law, including implied warranties and conditions of merchantability or fitness for a particular purpose. OfficeAutomata specifically disclaim any liability with respect to this document and no contractual obligations are formed either directly or indirectly by this document.*

*Any reproduction, retransmission, republication, translation, or other use of, all or part of this document is expressly prohibited, unless prior written permission has been granted by OfficeAutomata. OfficeAutomata, the OfficeAutomata logo and all other OfficeAutomata trademarks, logos and service marks used in this document are the trademarks or service marks of OfficeAutomata and its affiliates. All other marks contained herein are the property of their respective owners. OfficeAutomata has intellectual property rights relating to technology that is described in this document.*